

Your Art Journey

Extreme and Extraordinary

JourneyMaker

The activities in this packet are meant to be enjoyed together with friends or family.

Be sure to invite someone to take your art journey with you!

Are you using JourneyMaker from home?

While some of the activities are written for use in the museum, get creative and look for other objects in your home or immediate surroundings that could help you complete the prompts.

If you have access to a phone, tablet, or computer, you can find high-quality images of artworks on the Art Institute of Chicago's website at artic.edu/collection.

You can also access JourneyMaker online at artic.edu/journeymaker.

Generous support for JourneyMaker has been provided by the Woman's Board of the Art Institute of Chicago.

ART
INSTITUTE
CHICAGO

Measure Up!



Artworks in the museum range from teensy tiny to supersized.



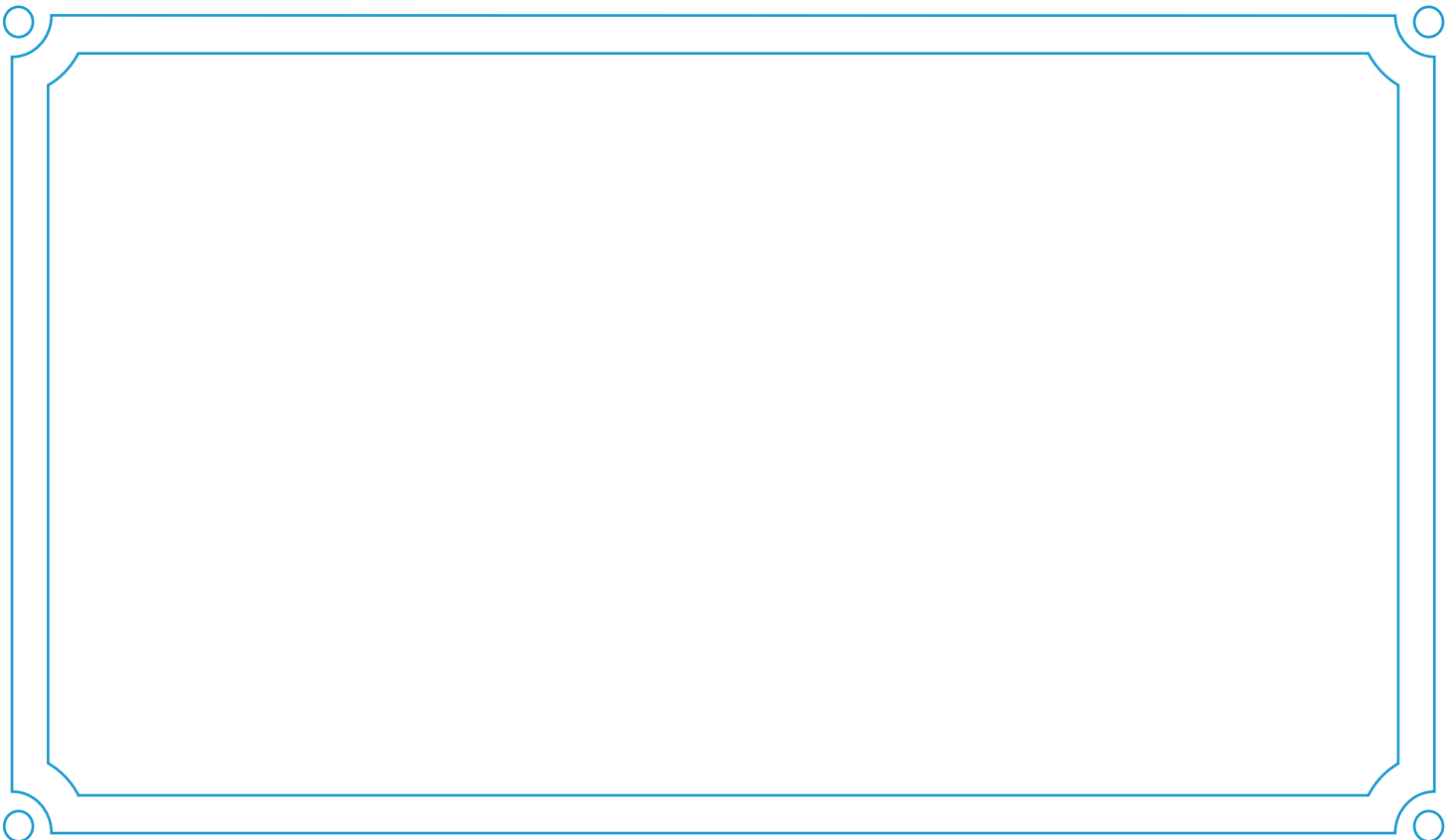
Plank Mask
Bwa people; Dossi, Burkina Faso
early/mid-20th century

Charles H. and Mary F. Worcester Collection Fund

Can you be extreme and extraordinary? First, pull your body in as small as you can. Then, stretch as large as your fingers and toes can go. Which pose can you hold the longest?

LOOK AGAIN: This butterfly mask is over seven feet wide. It was worn by the Bwa people for community ceremonies. Could you balance such a large mask?

Use this space to draw your poses:



Famous Faces at the Museum

ART
INSTITUTE
CHICAGO

Who is the figure behind this recognizable face?



Andy Warhol
Liz #3 [Early Colored Liz]
1963

Gift of Edlis Neeson Collection

There's a deadline to meet!
You have to interview this person for the newspaper! What questions will you ask, and how will they answer?

LOOK AGAIN: Elizabeth Taylor was a famous actress. Do you think artist Andy Warhol “made her up” to look her very best in this picture?

Use this space to record your interview:

A large, empty, rounded rectangular box with a red border, designed for students to record their interview notes. The box has a small tab at the top left corner, suggesting it might be a speech bubble or a callout box.

For related educational resources, visit our educator resource finder at artic.edu/tools-for-my-classroom.

If you have access to a phone, tablet, or computer, you can find high-quality images of artworks on the Art Institute of Chicago's website at artic.edu/collection.

Seriously Unusual



This artwork is made from some really unique materials.



Francis Picabia
Untitled (Match-Woman I)
1920

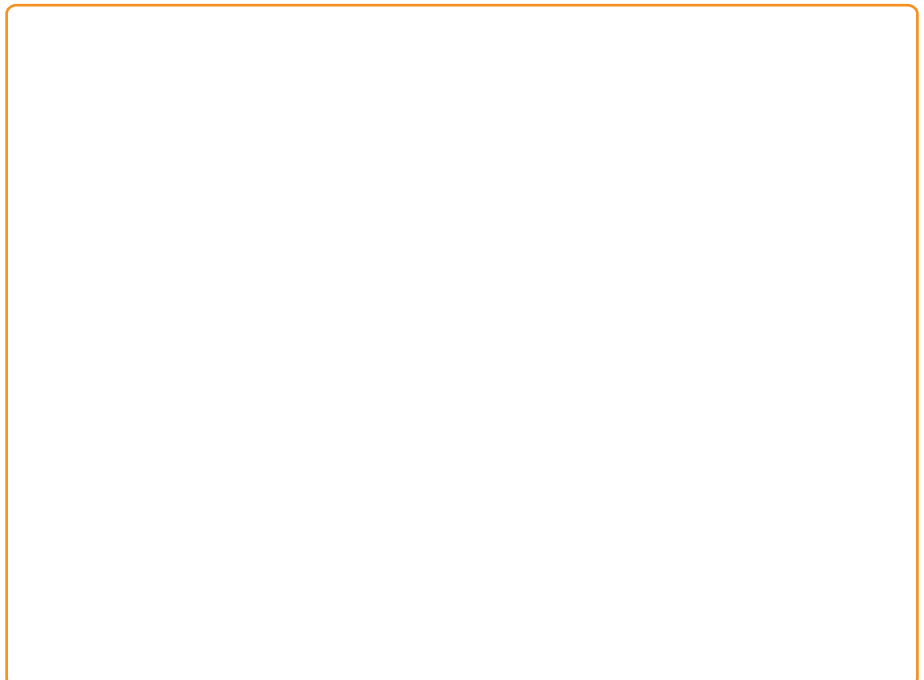
Lindy and Edwin Bergman Collection

Draw the same shape three times in the boxes below.

Add marks to turn each of the three shapes into something new. What is the most unusual thing you can create?

LOOK AGAIN: To create this piece, Francis Picabia used materials you might find at home. Find the matchsticks, hairpins, coins, hair rollers, and string in this work.

Use this space to draw your shapes:



Presto Chango!



Look closely. This artwork has been through some major changes.



Ancient Roman Statue of a Seated Woman

101–200

Katherine K. Adler Memorial Fund

Imagine what this artwork looked like when it was originally made. Sketch it here. Describe what colors or materials would have been used.

LOOK AGAIN: In ancient Rome, sculptures made from expensive marble were created so that the heads could be taken off and replaced.

Use this space to sketch:



Wild Style

Decorative details really change a room!

ART
INSTITUTE
CHICAGO



Design attributed to Clara Pierce Wolcott Driscoll
Hanging Head Dragonfly Shade on Mosaic and
Turtleback Base

About 1901–11

Tiffany Studios. Roger and J. Peter McCormick Endowments, Robert Allerton Purchase Fund, Goodman Endowment for the Collection of the Friends of American Art, Pauline S. Armstrong Endowment, Edward E. Ayer Endowment in memory of Charles L. Hutchinson; restricted gift of the Antiquarian Society in memory of Helen Richman Gilbert and Lena Turnbull Gilbert, Sandra van den Broek, Mr. and Mrs. Henry M. Buchbinder, Quinn E. Delaney, Mr. and Mrs. Wesley M. Dixon, Jamee J. and Marshall Field, Celia and David Hilliard, Elizabeth Souder Louis, Mrs. Herbert A. Vance, and Mr. and Mrs. Morris S. Weeden

As a family, decide if you would like to have this decorative object in your home. If yes, where? If no, why not?

LOOK AGAIN: This shade is made of small pieces of glass joined together like the pieces of a puzzle—see if you can find the dragonflies hidden among the different colors and shapes.

Use this space to write down your decisions:

For related educational resources, visit our educator resource finder at artic.edu/tools-for-my-classroom.

If you have access to a phone, tablet, or computer, you can find high-quality images of artworks on the Art Institute of Chicago's website at artic.edu/collection.